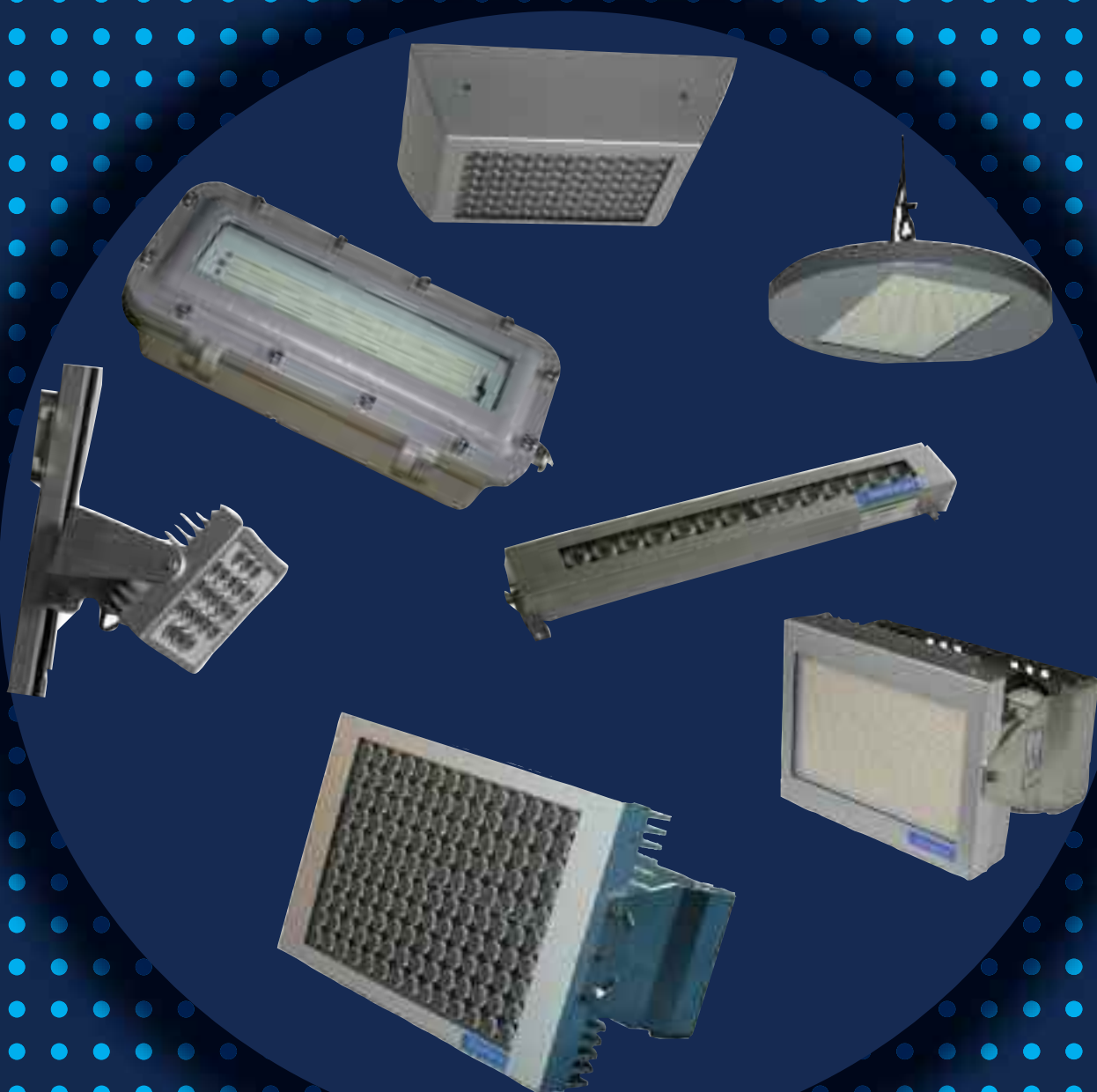


LED lighting products

Brandmaier
INFORMATIVE LEUCHTANZEIGEN



LED lighting

general



The LED technology is revolutionizing the illuminating engineering from scratch. With this technology you can save a lot of money because of a considerable higher life expectancy, a significant reduced energy consumption and the resulting lower CO₂ emissions plus a perfect light control.

The importance of the light is based especially on the visual effects to humans. Light is necessary to see, to sense our environment, for illuminating traffic areas, workstations and much more. For architects, light is an important tool for designing rooms.

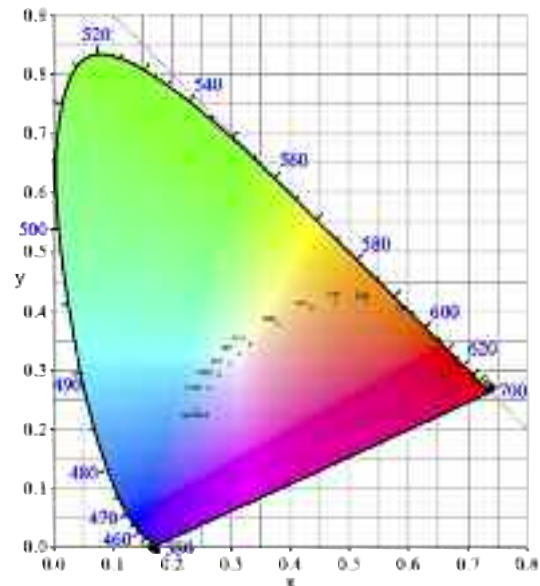
To adapt lighting systems to the properties of the people, we need to know how light acts on the people and how the light can be described with engineering-based instruments.

Some photometric terms:

Luminous flux	The quantity of light, which leaves the light source. The unit is 1 lumen (lm)
Luminance	Light intensity that strikes a given area. The unit is cd/m ²
Light intensity	The quantity of light, which is emitted in a certain direction. The unit is 1 candela (cd)
Illuminance	The quantity of the luminous flux that strikes a given area. The unit is 1 lux (lx)

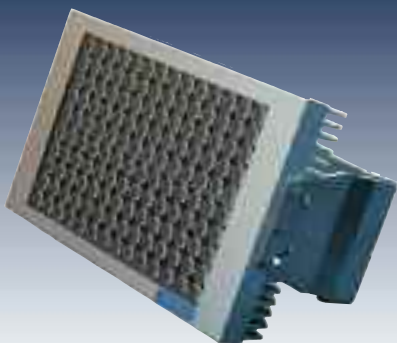
Because of research and development in the last years it has been possible to produce white LED's in a brightness to use this as a replacement of conventional lighting. LED lights are considerably more expensive than conventional bulbs, but this is compensated by the very low power consumption and the significant higher life expectancy. Another advantage of white LED's is the wide range of color temperatures which could be realized. All color temperatur is possible from warm white LED's with 2,700 K, neutral white with 4,000 until 5,000 K up to cool white LED's with 7,000K.

In the accompanying diagram is shown the color coordinates of different white color temperatures.



Advantages of Brandmaier LED-lighting

- major energy savings
- considerable decrease of maintenance costs
- long life LED's (approx. 60,000 h)
- different beam characteristics
- free of pollutants (no hazardous waste, no quicksilver, approx. 50% less CO₂)
- no UV-radiation
- conservation of nocturnal insects
- low generation of heat
- absolutely hum- and flicker-free
- high resistance to shock and vibration
- alle LED's are controlled by constant current
- produkt „made in Germany“
- dimmable as an option



LED flood light

Series ML

Fields of application

- spotlight buildings and towers
- illuminate halls, container stations, public places and facilities, sports grounds
- usage as crane lights, flood lights, hall lights and much more
- suitable for indoor and outdoor usage
- also applicable as mobile LED spotlight

Technical data

	LTML-140-O	LTML-140-W	LTML-140-M	LTML-140-P
Power consumption (at 230 VAC)	155 W	155 W	155 W	155 W
Luminous flux*	16,000 Lumen	16,000 Lumen	16,000 Lumen	16,000 Lumen
Light output*	> 100 lm/W	> 100 lm/W	> 100 lm/W	> 100 lm/W
colour temperature	2,700 - 6,250 K	2,700 - 6,250 K	2,700 - 6,250 K	2,700 - 6,250 K
Beam characteristic	oval	wide	medium	small
Durability of LEDs	60,000 h	60,000 h	60,000 h	60,000 h
Dimensions in mm (WxHxD)	400x265x135	400x265x135	400x265x135	400x265x135
Weight	approx. 15 kg	approx. 15 kg	approx. 15 kg	approx. 15 kg
Illuminating intensity in:*				
10 m	510 Lux	216 Lux	680 Lux	1.710 Lux
25 m	88 Lux	35 Lux	105 Lux	244 Lux
50 m	31 Lux	10 Lux	29 Lux	75 Lux
Safety class	IP 65	IP 65	IP 65	IP 65
Temperature range	-25° bis +50°	-25° bis +50°	-25° bis +50°	-25° bis +50°

*values are for cool white

Order code

cool white (6,000 K)	LTML-140-O-60	LTML-140-W-60	LTML-140-M-60	LTML-140-P-60
neutral white (5,000 K)	LTML-140-O-50	LTML-140-W-50	LTML-140-M-50	LTML-140-P-50
warm white (3,500 K)	LTML-140-O-35	LTML-140-W-35	LTML-140-M-35	LTML-140-P-35
warm white (2,700 K)	LTML-140-O-27	LTML-140-W-27	LTML-140-M-27	LTML-140-P-27



can be delivered in explosion-proof execution on demand





LED outdoor spotlight

Series AS

Fields of application

- spotlight buildings
- illuminate halls, container stations, underpasses, public places and facilities, factory premises, stations, platforms, petrol stations and much more
- suitable for indoor and outdoor usage
- large free space illuminations
- also applicable as mobile LED spotlight

Technical data

	LTAS-20/1	LTAS-40/1	LTAS-60/1	LTAS-100/1
Power consumption (at 230 VAC)	20 W	40 W	60 W	85 W
Luminous flux*	1,700 Lumen	3,400 Lumen	5,200 Lumen	8,000 Lumen
Light output*	85 lm/W	85 lm/W	85 lm/W	95 lm/W
colour temperature	2,700 - 6,250 K	2,700 - 6,250 K	2,700 - 6,250 K	2,700 - 6,250 K
Beam characteristic	120°	120°	120°	120°
Durability of LEDs	60,000 h	60,000 h	60,000 h	60,000 h
Dimensions in mm (WxHxD)	150x150x65	273x200x80	273x200x80	273x200x80
Weight	approx. 3 kg	approx. 7 kg	approx. 7 kg	approx. 7 kg
Illuminating intensity in:*				
2 m	147 Lux	249 Lux	440 Lux	615 Lux
4 m	36 Lux	62 Lux	104 Lux	163 Lux
6 m	16 Lux	27 Lux	54 Lux	73 Lux
Safety class	IP 65	IP 65	IP 65	IP 65
Temperature range	-25° bis +50°	-25° bis +50°	-25° bis +50°	-25° bis +50°

*values are for cool white

Order code

cool white (6,000 K)	LTAS-20/1-60	LTAS-40/1-60	LTAS-60/1-60	LTAS-100/1-60
neutral white (4,000 K)	LTAS-20/1-40	LTAS-40/1-40	LTAS-60/1-40	LTAS-100/1-40
warm white (3,500 K)	LTAS-20/1-35	LTAS-40/1-35	LTAS-60/1-35	LTAS-100/1-35
warm white (2,700 K)	LTAS-20/1-27	LTAS-40/1-27	LTAS-60/1-27	LTAS-100/1-27



can be delivered in explosion-proof execution on demand





LED infrared spotlight

Series IR

Fields of application

- light source for observation cameras at complete darkness
- monitoring of halls, container stations, public places and facilities, factory premises, solar parks, building sites and much more
- suitable for indoor and outdoor usage
- large free space illuminations

Technical data

	LTIR-20/1	LTIR-40/1	LTIR-60/1	LTIR-100/1
Power consumption (at 230 VAC)	20 W	40 W	60 W	85 W
Radiant power	1,900 mW	3,800 mW	7,500 mW	10,000 mW
Peak wavelength	850 nm	850 nm	850 nm	850 nm
Beam characteristic	120°	120°	120°	120°
Durability of LEDs	100,000 h	100,000 h	100,000 h	100,000 h
Dimensions in mm (WxHxD)	150x150x65	273x200x80	273x200x80	273x200x80
Weight	approx. 3 kg	approx. 7 kg	approx. 7 kg	approx. 7 kg
Safety class	IP 65	IP 65	IP 65	IP 65
Temperature range	-25° bis +50°	-25° bis +50°	-25° bis +50°	-25° bis +50°

Order code

Infrared (850nm)	LTIR-20/1-850	LTIR-40/1-850	LTIR-60/1-850	LTIR-100/1-850

can be delivered in explosion-proof execution on demand



LED outdoor spotlight for hazardous areas

Series HZ

Fields of application

- spotlight buildings
- illuminate halls, container stations, underpasses, public places and facilities, factory premises, stations, platforms, petrol stations and much more
- suitable for indoor and outdoor usage
- uable in hazardous areas just like salt water, tunnels and much more
- large free space illuminations
- also applicable as mobile LED spotlight
- temperature range down to -40°C deliverable as an option

Technical data

	LTHZ-20/1	LTHZ-40/1	LTHZ-60/1	LTHZ100/1
Power consumption (at 230 VAC)	20 W	40 W	60 W	85 W
Luminous flux*	1,700 Lumen	3,400 Lumen	5,200 Lumen	8,000 Lumen
Light output*	85 lm/W	85 lm/W	85 lm/W	95 lm/W
colour temperature	2,700 - 6,250 K	2,700 - 6,250 K	2,700 - 6,250 K	2,700 - 6,250 K
Beam characteristic	120°	120°	120°	120°
Durability of LEDs	60,000 h	60,000 h	60,000 h	60,000 h
Dimensions in mm (WxHxD)	150x150x65	273x200x80	273x200x80	273x200x80
Weight	approx. 3 kg	approx. 7 kg	approx. 7 kg	approx. 7 kg
Illuminating intensity in:*				
2 m	147 Lux	249 Lux	440 Lux	615 Lux
4 m	36 Lux	62 Lux	104 Lux	163 Lux
6 m	16 Lux	27 Lux	54 Lux	73 Lux
Safety class	IP 65	IP 65	IP 65	IP 65
Temperature range	-25° bis +50°	-25° bis +50°	-25° bis +50°	-25° bis +50°

*values are for cool white

Order code

cool white (6,000 K)	LTHZ-20/1-60	LTHZ-40/1-60	LTHZ-60/1-60	LTHZ-100/1-60
neutral white (4,000 K)	LTHZ-20/1-40	LTHZ-40/1-40	LTHZ-60/1-40	LTHZ-100/1-40
warm white (3,500 K)	LTHZ-20/1-35	LTHZ-40/1-35	LTHZ-60/1-35	LTHZ-100/1-35
warm white (2,700 K)	LTHZ-20/1-27	LTHZ-40/1-27	LTHZ-60/1-27	LTHZ-100/1-27

LED pendant luminaire

Series KS



Fields of application

- only for indoor usage
- illumination of halls, foyers and much more
- housing of the lamp custom-made to certain degree

Technical data

	LTKS-20/1	LTKS-40/1	LTKS-60/1	LTKS-100/1	LTKS-63-R
Power consumption (at 230 VAC)	20 W	40 W	60 W	85 W	70 W
Luminous flux*	1,700 Lumen	3,400 Lumen	5,200 Lumen	8,000 Lumen	7,200 Lumen
Light output*	85 lm/W	85 lm/W	85 lm/W	95 lm/W	> 100 lm/W
colour temperature	2,700 - 6,250 K	2,700 - 6,250 K	2,700 - 6,250 K	2,700 - 6,250 K	2,700 - 6,250 K
Beam characteristic	120°	120°	120°	120°	wide/medium/small
Durability of LEDs	60,000 h	60,000 h	60,000 h	60,000 h	60,000 h
Dimensions in mm (øxH)	250x400	360x740	360x740	360x740	267x100
Weight	approx. 5 kg	approx. 10 kg	approx. 10 kg	approx. 10 kg	approx. 6.8 kg
Illuminating intensity in:*					
2 m	147 Lux	249 Lux	440 Lux	615 Lux	306 Lux (in 10m) **
4 m	36 Lux	62 Lux	104 Lux	163 Lux	136 Lux (in 15m) **
6 m	16 Lux	27 Lux	54 Lux	73 Lux	75 Lux (in 20m) **
Temperature range	0° bis +50°	0° bis +50°	0° bis +50°	0° bis +50°	0° bis +50°

*values are for cool white

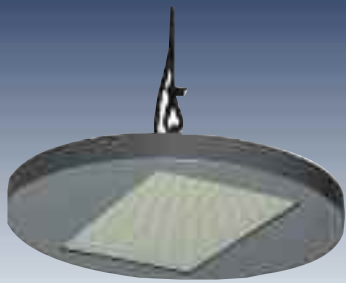
**values are for medium

Order code

cool white (6,000 K)	LTKS-20/1-60	LTKS-40/1-60	LTKS-60/1-60	LTKS-100/1-60	LTKS-63-R-X-60
neutral white (5,000 K)	LTKS-20/1-50	LTKS-40/1-50	LTKS-60/1-50	LTKS-100/1-50	LTKS-63-R-X-50
warm white (3,500 K)	LTKS-20/1-35	LTKS-40/1-35	LTKS-60/1-35	LTKS-100/1-35	LTKS-63-R-X-35
warm white (2,700 K)	LTKS-20/1-27	LTKS-40/1-27	LTKS-60/1-27	LTKS-100/1-27	LTKS-63-R-X-27

X = Beam characteristic





LED indoor spotlight

Series FS

Fields of application

- only for indoor usage
- illumination of halls, foyers and much more
- decorative luminaire with ultra-flat design

Technical data

	LTFS-20/1-Q	LTFS-20/1-R	LTFS-40/1-R	LTFS-60/1-R
Power consumption (at 230 VAC)	14 W	14 W	28 W	48 W
Luminous flux*	1,700 Lumen	1,700 Lumen	3,400 Lumen	5,200 Lumen
Light output*	120 lm/W	120 lm/W	120 lm/W	110 lm/W
colour temperature	2,700 - 6,250 K	2,700 - 6,250 K	2,700 - 6,250 K	2,700 - 6,250 K
Beam characteristic	120°	120°	120°	120°
Durability of LEDs	60,000 h	60,000 h	60,000 h	60,000 h
Dimensions in mm (øxH) (WxHxD)	150x150x15	200x15	300x20	300x20
Weight	approx. 0.9 kg	approx. 1.5 kg	approx. 4.1 kg	approx. 4.1 kg
Illuminating intensity in:*				
2 m	147 Lux	147 Lux	249 Lux	440 Lux
4 m	36 Lux	36 Lux	62 Lux	104 Lux
6 m	16 Lux	16 Lux	27 Lux	54 Lux
Temperature range	0° bis +50°	0° bis +50°	0° bis +50°	0° bis +50°

*values are for cool white

Order code

cool white (6,000 K)	LTFS-20/1-Q-60	LTFS-20/1-R-60	LTFS-40/1-R-60	LTFS-60/1-R-60
neutral white (4,000 K)	LTFS-20/1-Q-40	LTFS-20/1-R-40	LTFS-40/1-R-40	LTFS-60/1-R-40
warm white (3,500 K)	LTFS-20/1-Q-35	LTFS-20/1-R-35	LTFS-40/1-R-35	LTFS-60/1-R-35
warm white (2,700 K)	LTFS-20/1-Q-27	LTFS-20/1-R-27	LTFS-40/1-R-27	LTFS-60/1-R-27



LED Spotlight

Series SL

Fields of application

- suitable for indoor and outdoor usage
- exactly spotlighting of lettering, logos and much more
- deliverable also as a version for conductor lines (only LTSL-21-Q and LTSL-14-R)

Technical data

	LTSL-70-Q	LTSL-21-Q	LTSL-14-R
Power consumption (at 230 VAC)	80 W	30 W	20 W
Luminous flux*	8,000 Lumen	2,400 Lumen	1,600 Lumen
Light output*	> 100 lm/W	80 lm/W	80 lm/W
colour temperature	2,700 - 6,250 K	2,700 - 6,250 K	2,700 - 6,250 K
Beam characteristic	wide/medium/small	wide/medium/small	wide/medium/small
Durability of LEDs	60,000 h	60,000 h	60,000 h
Dimensions in mm (øxH)			153x70
(WxHxD)	350x280x190	153x153x70	
Weight	approx. 5.8 kg	approx. 1.9 kg	approx. 1.6 kg
Safety class	IP 65	IP 65	IP 65
Temperature range	-25° bis +50°	-25° bis +50°	-25° bis +50°

*values are for cool white

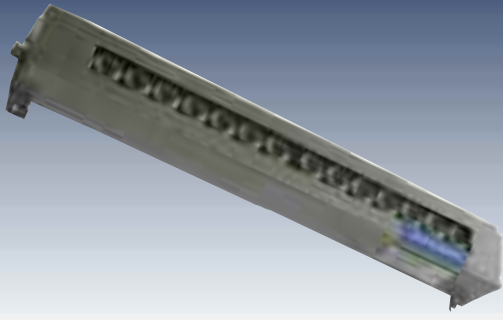
Order code

cool white (6,000 K)	LTSL-70-Q-X-60	LTSL-21-Q-X-60	LTSL-14-R-X-60
neutral white (5,000 K)	LTSL-70-Q-X-50	LTSL-21-Q-X-50	LTSL-14-R-X-50
warm white (3,500 K)	LTSL-70-Q-X-35	LTSL-21-Q-X-35	LTSL-14-R-X-35
warm white (2,700 K)	LTSL-70-Q-X-27	LTSL-21-Q-X-27	LTSL-14-R-X-27

X = Beam characteristic

LED machine light

Series MS



Fields of application

- suitable for indoor and outdoor usage
- illumination field of work at drilling machines, grinding machines, laser cutting machines and much more
- mobile application, because it is shock resistant
- splash water protected
- control cabinet lighting

Technical data

	LTMS-0107-W	LTMS-0114-W	LTMS-0121-W	LTMS-0221-W
Power consumption (at 230 VAC)	7 W	14 W	21 W	42 W
Luminous flux	700 Lumen	1,400 Lumen	2,100 Lumen	4,200 Lumen
Light output	> 100 lm/W	> 100 lm/W	> 100 lm/W	> 100 lm/W
colour temperature	5,250 - 6,250 K	5,250 - 6,250 K	5,250 - 6,250 K	5,250 - 6,250 K
Beam characteristic	46°	46°	46°	46°
Durability of LEDs	60,000 h	60,000 h	60,000 h	60,000 h
Dimensions in mm (WxHxD)	215x52x42	450x52x42	572x52x42	572x104x42
Weight	approx. 0.65 kg	approx. 1.25 kg	approx. 1.9 kg	approx. 3.5 kg
Safety class	IP 65	IP 65	IP 65	IP 65
Temperature range	-25° bis +50°	-25° bis +50°	-25° bis +50°	-25° bis +50°

Order code

cool white (6,000 K)	LTMS-0107-W-60	LTMS-0114-W-60	LTMS-0121-W-60	LTMS-0221-W-60
----------------------	----------------	----------------	----------------	----------------

LED ceiling lighting grid

Series RL

Fields of application

- in office rooms
- illuminate of halls, gangways, waiting halls
- only for indoor usage

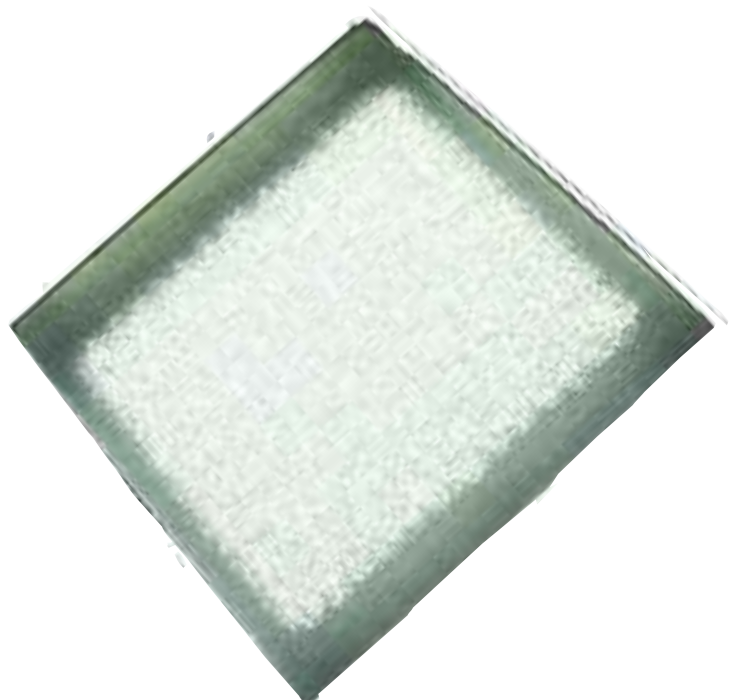
Technical data

	LTRL-40/1
Power consumption (at 230 VAC)	38 W
Luminous flux*	3,000 Lumen
Light output*	80 lm/W
colour temperature	2,700 - 6,250 K
Beam characteristic	wide
Durability of LEDs	60,000 h
Dimensions in mm (WxHxD)	625x625x48,5
Weight	approx. 3.5 kg
Illuminating intensity in:*	
2 m	290 Lux
4 m	185 Lux
6 m	130 Lux
Safety class	IP 45
Temperature range	0° bis +50°

*values are for cool white

Order code

cool white (6,000 K)	LTRL-40/1-60
neutral white (4,000 K)	LTRL-40/1-40
warm white (3,500 K)	LTRL-40/1-35
warm white (2,700 K)	LTRL-40/1-27





explosion proof execution

LED spotlight and LED flood light by Brandmaier can naturally provided as explosion proof construction. Below you see a short overview with the attributes of the explosion protection.

Classification of zones

Explosive areas are classified into zones according to propability of appearance of hazardous potentially explosive atmosphere.

Category	Zone	Description
1G	Zone 0	Area in which hazardous atmosphere, as mixture of air and flammable gases, steam and fog occurs all the time, frequently or on a long term period.
2G	Zone 1	Area in which hazardous atmosphere, as a mixture of air and flammable gases, steam and fog occurs casually under regulat conditions.
3G	Zone 2	Area in which hazardous atmosphere, as a mixture of air and flammable gases, steam and fog does not occur or only for short term period under regular conditons.
1D	Zone 20	Area in which hazardous atmosphere forming a cloud of flammable dust contained in air occurs all the time, frequently or in a long period.
2D	Zone 21	Area in which hazardous atmosphere forming a cloud of flammable dust contained in air occurs casually under normal conditions.
3D	Zone 22	Area in which hazardous atmosphere forming a cloud of flammable dust contained in air does usually not occur or only for short term period under normal conditions.

Temperature classifications

Temperatur-klasse	Höchstzulässige Oberflächen-temperatur der Betriebsmittel	Zündtemperatur der brennbaren Stoffe
T1	450 °C	> 450 °C
T2	300 °C	> 300 °C
T3	200 °C	> 200 °C
T4	135 °C	> 135 °C
T5	100 °C	> 100 °C
T6	85 °C	> 85 °C

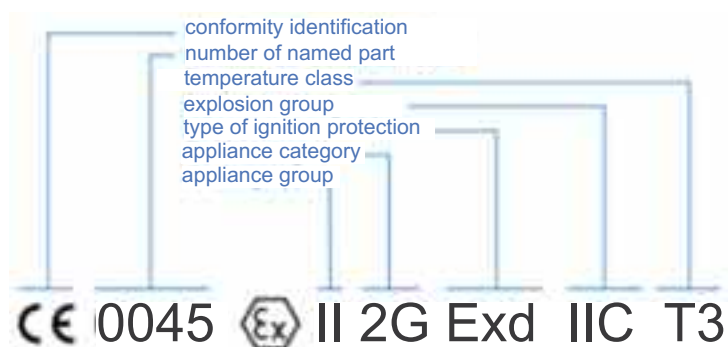
Explosion groups

for explosion protection aboverground there are three gropus:

Explosion group	typ. gas
II A	Propane
II B	Ethylene
II C	Hydrogen

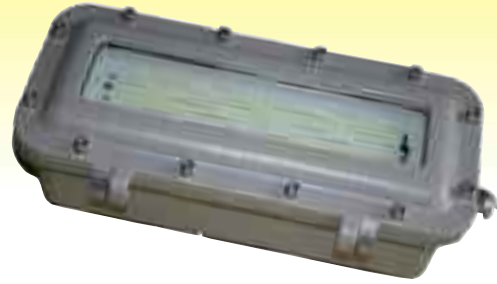
Ex-identification

The identification of explosion proof displays consists of the following:





LED spotlight zone 1



Fields of application

- usage in the Ex-area in refineries, chemical plants and offshore platforms
- mobile application, because it is shock resistant
- suitable for indoor and outdoor usage

Advantages

- absolutely hum- and flicker-free
- no maintenance necessary
- high resistance to shock and vibration
- considerable decrease of maintenance costs
- major energy savings
- long life LED's (approx. 60,000 h)
- safety class IP68 as an option

Technical data

	LTAS-20/2	LTAS-40/2	LTAS-60/2	LTAS-100/2	LTML-140/2
Power consumption (at 230 VAC)	20 W	40 W	60 W	85 W	155 W
Luminous flux*	1,700 Lumen	3,400 Lumen	5,200 Lumen	8,000 Lumen	16,000 Lumen
Light output*	85 lm/W	85 lm/W	85 lm/W	95 lm/W	> 100 lm/W
colour temperature	2,700 - 6,250 K	2,700 - 6,250 K	2,700 - 6,250 K	2,700 - 6,250 K	2,700 - 6,250 K
Beam characteristic	120°	120°	120°	120°	oval/wide/medium/small
Durability of LEDs	60,000 h	60,000 h	60,000 h	60,000 h	60,000 h
Dimensions in mm (WxHxD)	380x190x135	380x190x135	305x338x238	305x338x238	670x470x245
Weight	approx. 9 kg	approx. 9 kg	approx. 15 kg	approx. 15 kg	approx. 64 kg
Illuminating intensity in:*					
2 m	147 Lux	249 Lux	440 Lux	615 Lux	680 Lux (in 10m) **
4 m	36 Lux	62 Lux	104 Lux	163 Lux	105 Lux (in 25m) **
6 m	16 Lux	27 Lux	54 Lux	73 Lux	29 Lux (in 50m) **
Material of housing test certificate			Aluminium kupferfrei TÜV04 Atex 2472		
Explosion protection	II2G Exd II B T5/T6		II2GD Exd II C T5		II2GD Exd II B T5
Safety class	IP 65	IP 65	IP 65	IP 65	IP 65
Temperature range	-25° bis +50°	-25° bis +50°	-25° bis +50°	-25° bis +50°	-25° bis +50°

*values are for cool white

**values are for medium

Order code

cool white (6,000 K)	LTAS-20/2-60-ex 2G	LTAS-40/2-60-ex 2G	LTAS-60/2-60-ex 2G	LTAS-100/2-60-ex 2G	LTML-140/2-X-60-ex 2G*
neutral white (5,000 K)	LTAS-20/2-50-ex 2G	LTAS-40/2-50-ex 2G	LTAS-60/2-50-ex 2G	LTAS-100/2-50-ex 2G	LTML-140/2-X-50-ex 2G*
warm white (3,500 K)	LTAS-20/2-35-ex 2G	LTAS-40/2-35-ex 2G	LTAS-60/2-35-ex 2G	LTAS-100/2-35-ex 2G	LTML-140/2-X-35-ex 2G*
warm white (2,700 K)	LTAS-20/2-27-ex 2G	LTAS-40/2-27-ex 2G	LTAS-60/2-27-ex 2G	LTAS-100/2-27-ex 2G	LTML-140/2-X-27-ex 2G*

*X = Beam characteristic



LED spotlight zone 2

Fields of application

- usage in refineries, chemical plants and offshore platforms
- mobile application, because it is shock resistant
- suitable for indoor and outdoor usage

Advantages

- absolutely hum- and flicker-free
- no maintenance necessary
- high resistance to shock and vibration
- considerable decrease of maintenance costs
- major energy savings
- long life LED's (approx. 60,000 h)



Technical data

	LTAS-60/2	LTAS-100/2	LTML-140/2
Power consumption (at 230 VAC)	60W	85 W	155 W
Luminous flux*	5,200 Lumen	8,000 Lumen	16,000 Lumen
Light output*	85 lm/W	95 lm/W	> 100 lm/W
colour temperature	2,700 - 6,250 K	2,700 - 6,250 K	2,700 - 6,250 K
Beam characteristic	120°	120°	oval/wide/medium/small
Durability of LEDs	60,000 h	60,000 h	60,000 h
Dimensions in mm (WxHxD)	273x200x80	273x200x80	400x265x135
Weight	approx. 7 kg	approx. 7 kg	approx. 15 kg
Illuminating intensity in:*			
2 m	249 Lux	440 Lux	680 Lux (in 10m) **
4 m	62 Lux	104 Lux	105 Lux (in 25m) **
6 m	27 Lux	54 Lux	29 Lux (in 50m) **
Safety class	IP 65	IP 65	IP 65
Temperature range	-25° bis +50°	-25° bis +50°	-25° bis +50°

*values are for cool white

**values are for medium

Order code

cool white (6,000 K)	LTAS-60/2-60-ex 3G	LTAS-100/2-60-ex 3G	LTML-140/2-X-60-ex 3G *
neutral white (5,000 K)	LTAS-60/2-50-ex 3G	LTAS-100/2-50-ex 3G	LTML-140/2-X-50-ex 3G *
warm white (3,500 K)	LTAS-60/2-35-ex 3G	LTAS-100/2-35-ex 3G	LTML-140/2-X-35-ex 3G *
warm white (2,700 K)	LTAS-60/2-27-ex 3G	LTAS-100/2-27-ex 3G	LTML-140/2-X-27-ex 3G *

* X = Beam characteristic



LED spotlight portable

Fields of application

- usage in refineries, chemical plants and offshore platforms
- mobile application, because it is shock resistant
- suitable for indoor and outdoor usage

Advantages

- absolutely hum- and flicker-free
- no maintenance necessary
- high resistance to shock and vibration
- considerable decrease of maintenance costs
- major energy savings
- long life LED's (approx. 60,000 h)



Technical data

	LTAS-40/2	LTAS-60/2	LTAS-100/2	LTML-70/2
Power consumption (at 230 VAC)	40 W	60 W	85 W	80 W
Luminous flux*	3,400 Lumen	5,200 Lumen	8,000 Lumen	8,000 Lumen
Light output*	85 lm/W	85 lm/W	95 lm/W	> 100 lm/W
colour temperature	2,700 - 6,250 K	2,700 - 6,250 K	2,700 - 6,250 K	2,700 - 6,250 K
Beam characteristic	120°	120°	120°	oval/wide/medium/small
Durability of LEDs	60,000 h	60,000 h	60,000 h	60,000 h
Dimensions in mm (WxHxD)	330x350x235	330x350x235	330x350x235	330x350x235
Weight	approx. 7.75 kg	approx. 7.75 kg	approx. 7.75 kg	approx. 7.75 kg
Illuminating intensity in:*				
2 m	249 Lux	440 Lux	615 Lux	340 Lux (in 10m) **
4 m	62 Lux	104 Lux	163 Lux	52 Lux (in 25m) **
6 m	27 Lux	54 Lux	73 Lux	14 Lux (in 50m) **
Safety class	IP 65	IP 65	IP 65	IP 65
Temperature range	-25° bis +50°	-25° bis +50°	-25° bis +50°	-25° bis +50°

*values are for cool white

**values are for medium

Order code

cool white (6,000 K)	LTAS-40/2-m-60-ex 3G	LTAS-60/2-m-60-ex 3G	LTAS-100/2-m-60-ex 3G	LTML-70/2-m-X-60-ex 3G *
neutral white (5,000 K)	LTAS-40/2-m-50-ex 3G	LTAS-60/2-m-50-ex 3G	LTAS-100/2-m-50-ex 3G	LTML-70/2-m-X-50-ex 3G *
warm white (3,500 K)	LTAS-40/2-m-35-ex 3G	LTAS-60/2-m-35-ex 3G	LTAS-100/2-m-35-ex 3G	LTML-70/2-m-X-35-ex 3G *
warm white (2,700 K)	LTAS-40/2-m-27-ex 3G	LTAS-60/2-m-27-ex 3G	LTAS-100/2-m-27-ex 3G	LTML-70/2-m-X-27-ex 3G *

* X = Beam characteristic



Brandmaier

INFORMATIVE LEUCHTANZEIGEN

